



## Proficy\* HMI/SCADA – CIMPLICITY\*

### Plant-wide data collection, monitoring and control

Today's production and process environments share one important trait – they are only as effective as the quality of the data they are built upon. In order to truly understand and control your operations, you must be able to trust that your data is fully accurate, relevant and up to date. Furthermore, you must be able to share that information with users across your enterprise. As part of GE Fanuc Automation's Proficy family of software and solutions,

Proficy HMI/SCADA – CIMPLICITY gives you that power. With an open system design approach, a true client/server architecture, and the latest web technologies, CIMPLICITY allows you to realize the benefits of digitization for the collection, monitoring, supervisory control and sharing of critical process and production data throughout your operations.



# Proficy HMI/SCADA – CIMPLICITY Features

## Powerful Data Collection

CIMPLICITY's open communications strategy enables you to connect to hundreds of other systems and devices. Through native drivers and standard communication interfaces such as OPC, you are capable of collecting data from virtually any third party device. The product's true client/server architecture provides for this data collection, as well as the seamless sharing of the information out to multiple users or other plant systems.

## CIMPLICITY Environment

### CIMPLICITY Workbench

Patterned after the Microsoft Windows Explorer, the CIMPLICITY Workbench provides an integrated development environment and gives users a new perspective on the application configuration, offering power and flexibility.

### CIMPLICITY Tools

Each CIMPLICITY system includes a complete set of tools that give you the functionality you need to construct and integrate your most demanding applications.

These include:

- **CimEdit** – the development environment for visualization screens that accurately depict the production process
- **CimView** – the runtime visualization environment that displays process information in both text and graphic formats
- **Symbols and Objects Library** – an extensive library of symbols, along with the powerful SmartObjects feature, that allow for an easy application creation and maintenance. With SmartObjects, you can create your own custom objects and easily drag-and-drop them into the screens.
- **Alarms and Alarm Management** – extremely flexible alarm routing, sorting, filtering and blocking capabilities
- **Basic Control Engine** – script and program applications with a Visual Basic style language
- **Point Control Panel** – allows you to verify the data collection and alarm configuration of your system without configuring a single graphics screen
- **Alarm Viewer** – an ActiveX object that can be embedded into screens to create a single, seamless interface for your process

## Advanced Visualization

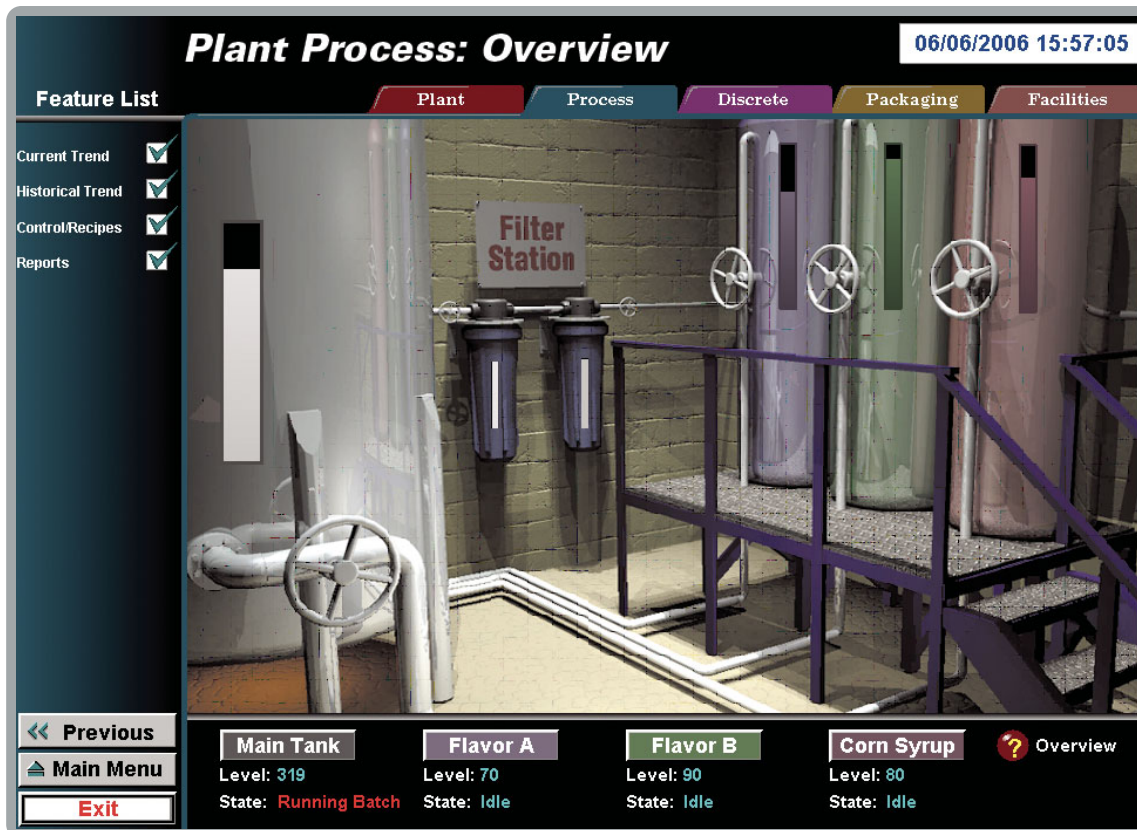
CIMPLICITY provides several visualization options which give you a great deal of flexibility and control over how and where you view your data.

### Proficy HMI/SCADA – CIMPLICITY Viewer

The Proficy HMI/SCADA – CIMPLICITY Viewer is the standard CIMPLICITY client. It serves as a traditional PC-based client in that it is installed on the hard disk and accesses data from a local or remote server. Applications that can be run on CIMPLICITY Viewer include real-time graphics, trending, alarming and reporting. A CIMPLICITY Development Viewer option is available that allows users to perform development on line including building graphics and adding points to local or distributed servers.

### Proficy HMI/SCADA – CIMPLICITY Terminal Server Viewer

The Proficy HMI/SCADA – CIMPLICITY Terminal Server Viewer is a thin client and web solution that makes use of the Microsoft Terminal Server technology and provides the capabilities of a standard CIMPLICITY Viewer. From any CIMPLICITY Terminal Server Viewer station, users have complete access to their screens and the CIMPLICITY Server – making full use of CIMPLICITY Viewer technology, ActiveX controls and third party content.



With Proficy HMI/SCADA – CIMPLICITY users can create powerful interactive screens that allow users to review and control process operations.

### Proficy HMI/SCADA – CIMPLICITY WebView

Proficy HMI/SCADA – CIMPLICITY WebView is an additional thin CIMPLICITY client solution for distributing information to many users. CIMPLICITY WebView is a fast, easy and cost-effective way to send CIMPLICITY information to users over the Internet or Intranet.

#### • Master Objects

Master objects are template objects that can be created and used identically on multiple screens. In addition, scripts can be linked to the master object that will be automatically replicated as well.

#### • Database Logger

CIMPLICITY provides you with the ability to choose how and where you want to store your critical and valuable production and process information. CIMPLICITY supports logging to the Proficy Historian, Proficy SQL (Microsoft SQL), and Oracle. You can choose to log to one, or all of these data repositories if you choose.

#### • Trending

Trending allows you to analyze data collected by the CIMPLICITY system or by other third-party software packages. This includes the comparison of current trends with historical trends to quickly identify and correct process malfunctions.

#### • Scripting

Scripting is provided to extend the CIMPLICITY capabilities for tailoring individual applications according to specific needs. Scripts can be executed based on process events, such as changing the value of a point, a specific alarm state or can be based on time of day.

#### • System Points

CIMPLICITY provides many predefined System Points on a wide variety of topics, such as project and computer information, date and time, and alarms.

#### • Dynamic Measurement Systems

CIMPLICITY projects can be developed to let you dynamically switch between different measurement systems with a simple point and click.

#### • Dynamic Screen Localization

The Dynamic Screen Localization enables a CIMPLICITY application to be adapted to accommodate multiple users who speak different languages.

### CIMPLICITY Options

CIMPLICITY also offers a number of optional features that can further enhance the value of the software for your particular environment.

#### Action Calendar

The Action Calendar gives you the power to create, maintain and execute a calendar schedule of manufacturing events and corresponding actions. This allows controlling lights, heat and equipment based on a pre-defined schedule.

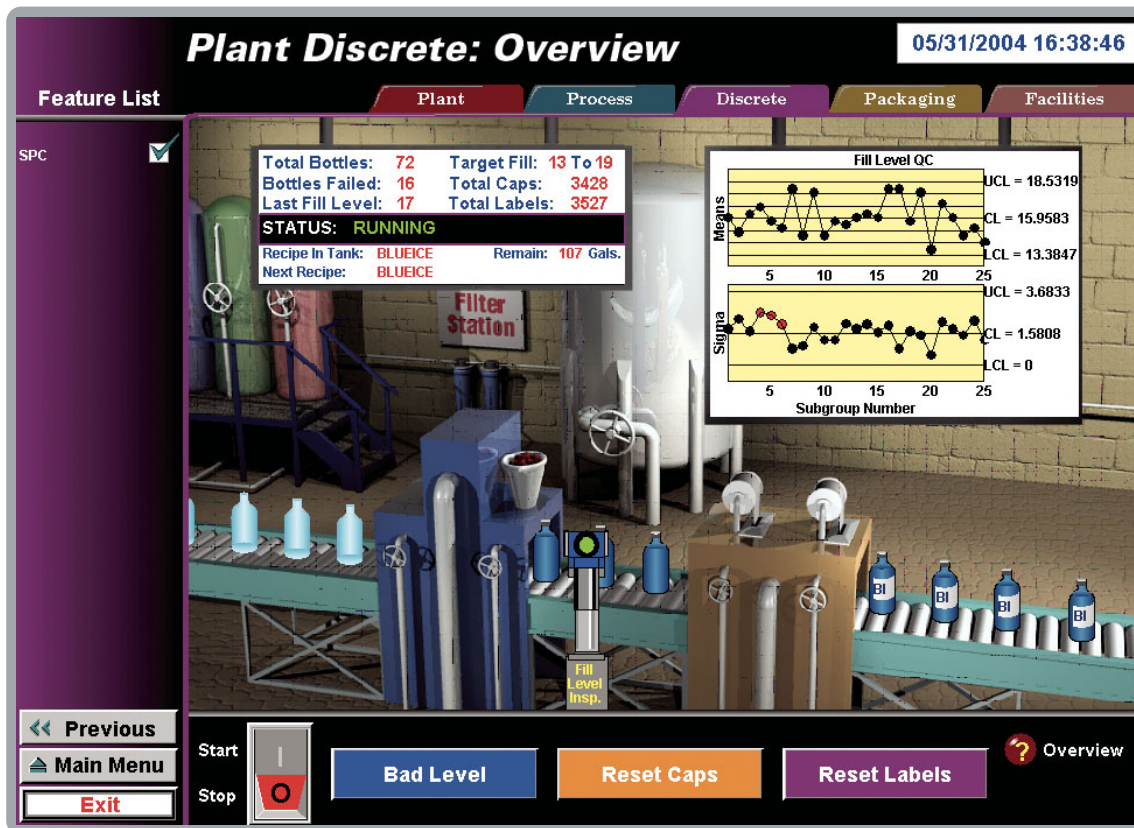
#### CIMPLICITY HMI for CNC

CIMPLICITY HMI for CNC provides the link of the HMI/SCADA system to GE Fanuc's Open CNC products. It offers operator interfaces, production monitoring and reporting, data acquisition and cell control for a comprehensive integration of CNC into the overall application. More information is available from [www.gefanuc.com](http://www.gefanuc.com).

#### Integrator's Toolkit

The Integrator Toolkit includes four powerful application programming interfaces (APIs) that enable users to develop custom applications, which integrate with CIMPLICITY seamlessly. These include:

- Device Communications Toolkit
- Point Management API
- Login API
- Alarm Management APIs



Proficy HMI/SCADA – CIMPLICITY can be enhanced with powerful option modules such as SPC that are fully integrated. Your operations can be monitored continuously and any SPC related alarms are handled with the same common alarm viewer.

### OLE for Process Control (OPC)

OPC allows you to integrate CIMPLICITY with other systems for seamless data exchange. There are two OPC components available within CIMPLICITY:

- OPC Client capabilities are built into HMI Servers and allow for an easy integration of third-party device communications drivers
- OPC Server is a product option that provides capabilities to offer an open systems approach to integrating CIMPLICITY with other software applications.

### Recipes

Recipes allow you to create, maintain, upload and download recipes (a group of setpoints) to the production process. In addition, they allow for maintenance of device-independent recipes, sending a set of parameter values to the specified equipment.

### Redundancy

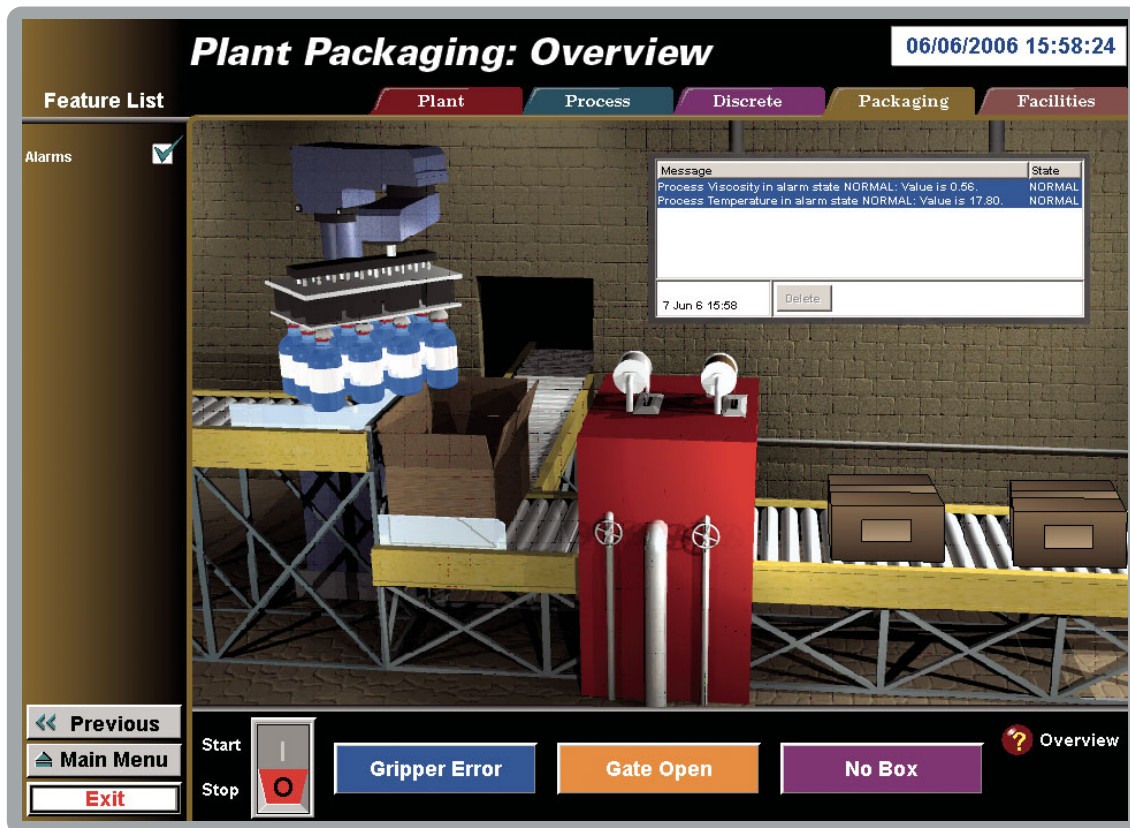
Redundancy provides for the failover from a primary computer to a secondary computer should the primary computer fail. CIMPLICITY supports redundancy at several levels to minimize the effect of any failure. These include backup CIMPLICITY Servers and network redundancy.

### Statistical Process Control (SPC)

Statistical Process Control provides tools needed for data measurement and analysis, as well as process improvements and quality control.

### System Sentry

System Sentry helps the user to keep the system running by constantly providing real-time information about the health of computers and the CIMPLICITY application within a network. It immediately alerts you to problem conditions and provides tools to pinpoint the cause.



Proficy HMI/SCADA - CIMPLICITY provides a powerful solution to your discrete manufacturing needs. With plant wide alarm management capabilities you can quickly isolate problems, improve quality, and reduce scrap.



## Proficy HMI/SCADA – CIMPLICITY Capabilities

- Collect and share real-time and historical data with users on all business levels
- Provide actionable visibility to monitor and control plant processes, equipment and resources
- Easy application development and deployment
- Advanced alarming and alarm management to maximize productivity and quality
- Seamless scalability as a result of a true client/server architecture
- Fully integrated with the Proficy Family of Software Products
- Open system design protects your current system investments

### GlobalCare – Total Service and Support

Complex business environments have complex support needs, and GE Fanuc's GlobalCare Support offering is the best and most comprehensive way to optimize your investment. We developed GlobalCare Support to function beyond the scope of a traditional, reactive support model to provide you with fast, effective solutions throughout the product lifecycle. As a result, we provide a continuously high level of service for your complex support requirements.

GE Fanuc's GlobalCare provides a consistent worldwide backbone of professionals that offer business hours and 24 x 7 emergency support, software version upgrades and advanced tools to keep you operational and productive. GlobalCare Support is available in two levels, Complete and Assist, allowing you to adopt the support solution that best meets your needs.

To learn more about GE Fanuc's products and services visit [gefanuc.com](http://gefanuc.com) or call **1-800 GE Fanuc** (434-978-6036 outside the U.S.).

### Proficy Software Modules:

*Real-Time Information Portal*  
Proficy Real-Time Information Portal

*Plant Data Repository*  
Proficy Historian

*Plant Performance and Execution*  
Proficy Efficiency  
Proficy Production  
Proficy Tracker  
Proficy Machine Tool Efficiency

*Asset Management*  
Proficy Enterprise Asset Management  
Proficy Remote Monitoring & Diagnostic  
Proficy Change Management

*Integrated Quality*  
Proficy Quality  
Proficy Non Conformance Reporting  
Proficy Shop Floor SPC

*HMI / SCADA*  
Proficy HMI/SCADA – iFIX®  
Proficy HMI/SCADA – CIMPLICITY®  
Proficy View – Machine Edition

*Process Solutions*  
Proficy Process Systems\*  
Proficy Batch Execution  
Proficy Batch Analysis  
Proficy RX™

*Programming & Control*  
Proficy Logic Developer  
Proficy Motion Developer – Machine Edition

### GE Fanuc Support & Services:

GlobalCare Support  
Professional Services  
Training

### GE Fanuc Automation Information Centers

Americas:  
1 800 GE FANUC or 434 978 5100

Asia Pacific:  
86 21 3222 4555

Europe, Middle East and Africa:  
800 1 GE FANUC or 800 1 4332682  
or 1 780 401 7717

Europe, Middle East and Africa (CNC):  
352 727979 11

### Additional Resources

For more information, please visit the GE Fanuc web site at:

[www.gefanuc.com](http://www.gefanuc.com)

