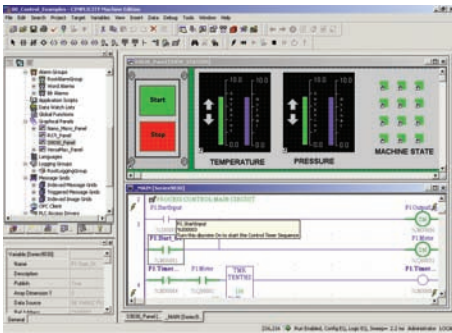




## Series 90™-30 PLCs

**The Series 90™-30 PLCs is a family of controllers, I/O systems and specialty modules** designed to meet the demand for versatile industrial solutions. With its single overall control architecture, the Series 90-30 has been the PLC of record in over 200,000 applications, such as high-speed packaging, material handling, complex motion control, water treatment, continuous emissions monitoring, mining, food processing, elevator control, injection molding and many more.



**Thanks to its modular design, the Series 90-30 offers unmatched versatility.** Configure just the system you need, saving critical space and reducing cost.

With over 100 I/O modules, the Series 90-30 PLC can be adapted to a wide range of applications.

- Digital interfaces for push buttons, switches, proximity sensors, relays, contactors and many other devices
- Analog modules with varying degrees of resolution for flow, temperature or pressure applications
- Direct connect wiring or remote termination
- Local or remote I/O systems

**Series 90-30 Ethernet communications provide** a real-time link between the plant floor and the boardroom. You can begin with an Ethernet-enabled CPU, or at a later date, choose from our selection of rack-mounted Ethernet modules. The Series 90-30 Ethernet module supports both SRTP and Modbus TCP/IP application protocols.

**The scalable processing power in the Series 90-30 CPU** creates a clear upgrade path. Create the system that's ideal today, while leaving open the option of creating a more powerful system tomorrow — without having to change your application software.

**Motion control integrated into the Series 90-30** fosters high performance point-to-point applications.

**A variety of Series 90-30 field bus interfaces** enables distributed control and/or I/O. Choose from Ethernet EGD, Profibus-DP™, Genius®, DeviceNet™ and Interbus-S™ modules. Field Bus interface modules are easy to install and quick to configure. Plug them into an existing system or design a new system around them.

**Programming your Series 90-30 PLC is easy with Proficy Logic Developer PLC-Machine Edition.**

With the most advanced PLC programming tools on the market today, Proficy Logic Developer PLC is an integrated solution for PLC and remote I/O hardware configuration, PLC programming languages, application development, and on-line diagnostics. Supported programming languages include Ladder Diagram (LD), Instruction List (IL), Structural Text (ST), and C Block.

**The Series 90-30 stands out among small controls for offering redundancy options.**

The Series 90-30 is the low-cost solution for high availability applications, with redundant CPUs and power supplies.

**Easy trouble shooting and machine setup using a handheld PDA.**

Proficy Logic Developer PDA-Machine Edition software allows you to interface a Palm® handheld device to your Series 90-30 controller. With Proficy Logic Developer PDA, you can monitor/change data, view diagnostics, force ON/OFF, and configure machine setup — saving you time and increasing productivity.

# Ordering Information

	Catalog Number	Description	Catalog Number	Description
Discrete Input Modules	IC693MDL230	120 VAC Isolated Input (8 Points)	IC693MDL645	24 VDC Input, Neg/Pos Logic (16 Points)
	IC693MDL231	240 VAC Isolated Input (8 Points)	IC693MDL646	24 VDC Input, Neg/Pos Logic, 1 msec Filter (16 Points)
	IC693MDL240	120 VAC Input (16 Points)	IC693MDL648	48 VDC Input, Neg/Pos Logic, 1 msec filter, Neg/Pos Logic (16 Points)
	IC693MDL241	24 VAC/VDC Input (16 Points)	IC693MDL653	24 VDC Input, Neg/Pos Logic, 2msec Filter (32 Points)
	IC693MDL250*	120 VAC Isolated Input (16 Points)	IC693MDL654	5/12 VDC (TTU) Input, Neg/Pos Logic, (32 Points)
	IC693MDL260*	120 VAC Input (32 Points)	IC693MDL655	24 VDC Input, Neg/Pos Logic, 1 ms, (32 Points)
	IC693MDL632	125 VDC Input (8 Points)	IC693MDL660*	24 VDC Input, Neg/Pos Logic, 0.5ms, 1.0ms, 2.0ms, 5ms, 10ms, 50ms and 100ms filtering, (32 Points)
	IC693MDL634	24 VDC Input, Neg/Pos Logic (8 Points)	IC693ACC300	Input Simulator Module (8 Points)
Discrete Output Modules	IC693MDL310	120 VAC Output, 0.5 Amp (12 Points)	IC693MDL740	12/24 VDC Output, 0.5 Amp, Positive Logic (16 Points)
	IC693MDL330	120/240 VAC Output, 2 Amp (8 Points)	IC693MDL741	12/24 VDC Output, 0.5 Amp, Negative Logic (16 Points)
	IC693MDL340	120 VAC Output, 0.5 Amp (16 Points)	IC693MDL742	12/24 VDC Output, 1 Amp, Positive Logic (16 Points), Fused
	IC693MDL350*	120/240 VAC Isolated Output, 2 Amp (16 Points)	IC693MDL748	48 VDC Output, 0.5 Amps, Positive Logic (8 Points)
	IC693MDL390	120/240 VAC Isolated Output, 2 Amp (5 Points)	IC693MDL750	12/24 VDC Output, Negative Logic (32 Points)
	IC693MDL730	12/24 VDC Output, 2 Amp, Positive Logic (8 Points)	IC693MDL751	12/24 VDC Output, Positive Logic (32 Points)
	IC693MDL731	12/24 VDC Output, 2 Amp, Negative Logic (8 Points)	IC693MDL752	5/12/24 VDC (TTU) Output, Negative Logic, (32 Points)
	IC693MDL732	12/24 VDC Output, 0.5 Amp, Positive Logic (8 Points)	IC693MDL753	12/24 VDC Output, Positive Logic (32 Points)
	IC693MDL733	12/24 VDC Output, 0.5 Amp, Negative Logic (8 Points)	IC693MDL754*	12/24 VDC Output, 0.75 amps, Pos Logic with ESCP protection, (32 Points)
	IC693MDL734	125 VDC Output, (6 Points)		
	IC693MDL930*	Relay Output, Isolated, 4 Amp (16 Points)	IC693MDL940	Relay Output, 2 Amp (16 Points)
	IC693MDL931	Relay Output, 8 Amp Form B/C contacts, Isolated in 2 Groups of 4 (8 Points)		
	Mixed Discrete Modules	IC693MDR390	Mixed I/O, 24 VDC Input (8 points), Relay Output (8 points)	IC693MAR590
Analog Input Modules	IC693ALG220	Analog Input, Voltage/Current, 4 Channels	IC693ALG222	Analog Input, Voltage 16 Single/8 Differential Channels
	IC693ALG221	Analog Input, Current, 4 Channels	IC693ALG223	Analog Input, Current, 16 Single Channels
Analog Output Modules	IC693ALG390	Analog Output, Voltage, 2 Channels	IC693ALG392	High Density Analog Output (8 Channels)
	IC693ALG391	Analog Output, Current, 2 Channels		
Mixed Analog Modules	IC693ALG442	Analog Combo Module 4IN/2OUT		
Motion Modules	IC693APU300	High Speed Counter (HSC)	IC693DSM302	Digital Servo Motion Controller, 2 Axis
	IC693APU301	Axis Positioning Module (APM), 1 Axis	IC693DSM314	Digital Servo Motion Controller, 1-2 Axis of Digital Servo or 1-4 Axis Analog Servo
	IC693APU302	Axis Positioning Module (APM), 2 Axis	IC693DSM324	Digital Servo Motion Controller, 4 Axis of Digital Servo with fiber optic interface to amplifiers
	IC693APU305	High Speed Counter with Gray Code Encoder or an A QUAD B Encoder Input		
Specialty Modules	IC693MDL760	Solenoid Valve Output (11 Points)/24 VDC Output, 0.5 Amp, Positive Logic (5 Points)	IC693PTM101	Power Transducer Module, CT and PT Interface 120/240 VAC (1m cable)
	IC693PCM301	Programmable Coprocessor Module, 192 KB (47 KB Basic or C Program), 2 Serial Ports	IC693TCM302	Temperature Control Module, (8) TC In and (8) 24 VDC Solid State Outputs
	IC693PCM311	Programmable Coprocessor Module, 640 KB (640 KB Basic or C Program), 2 Serial Ports	IC693TCM303	Temperature Control Module Extended Temperature Range, (8) TC In and (8) 24 VDC Solid State Outputs
	IC693PTM100	Power Transducer Module, CT and PT Interface 120/240 VAC (0.5m Cable)		
Communications Modules	IC693BEM331	Genius Bus Controller (Supports I/O and Datagrams)	IC693PBM200	Profibus DP Master Module
	IC693CMM302	Communication Module, Genius (1 Kbyte) GCM+ (No Datagram Support)	IC693PBM201	Profibus DP Slave Module
	IC693CMM311	Communications Module, CCM, RTU, SNP, and SNPx Protocols	IC693DNM200	DeviceNet Master Module
	IC693CMM321	Ethernet Interface TCP/IP Module, 10Mbps (Supports SRTP and Modbus TCP/IP, No EGD)	IC693DNS201	DeviceNet Slave Module
Remote I/O	IC693NIU004	Ethernet Network Interface Unit. Two Ethernet ports, one connection (one IP) with built in switch. Requires IC693CHS397 (5 slot rack) or IC693CHS391 (10 slot rack) and a Series 90-30 high capacity power supply.		
Controllers	IC693CPU311	5-Slot Base with CPU in Base (6KBytes User Program), Not Expandable	IC693CPU363	CPU 363 Module (240KBytes Configurable User Memory 4K I/O, 8 Racks), 2 Built-In Serial Ports, Logic Execution is .22msec/K
	IC693CPU313	5-Slot Base with Turbo CPU in Base (Logic Execution is .6 msec), 1K Registers, (12KBytes User Program), Not Expandable	IC693CPU366	CPU 366 Module (240KBytes Configurable User Memory), with built-in Profibus Master (V1) Port, no built-in serial ports, Logic Execution is .22msec/K
	IC693CPU323	10-Slot Base with Turbo CPU in Base (Logic Execution is .6 msec) 12Kbytes User Program, Not Expandable	IC693CPU367	CPU 367 Module (240KBytes Configurable User Memory), with built-in Profibus Slave (V1) Port, no built-in serial ports, Logic Execution is .22msec/K
	IC693CPU350	CPU 350 Module (74KBytes User Memory, 4K I/O, 8 Racks), No Built-In Serial Ports, Logic Execution is .22msec/K	IC693CPU374	CPU 374 PLUS Module (240KBytes Configurable User Memory), No Built-In Serial Ports, Built-In 10/100Mbps with Built-In Switch (two RJ 45 ports), Logic Execution is 0.15msec/K, Ethernet Supports SRTP, EGD and Producer/Consumer Channels and Web Support, Logic Execution is .15msec/K.
	IC693CPU360	CPU 360 Module (240KBytes Configurable User Memory, 4K I/O, 8 Racks), No Built-In Serial Ports, Logic Execution is .22msec/K		
Backplanes	IC693CHS391	Base, CPU, 10 Slots, Use with CPU331/CSE331 and above	IC693CHS397	Base, CPU, 5 Slots (use with CPU331/CSE331 and above)
	IC693CHS392	Base, Expansion, 10 Slots	IC693CHS398	Base, Expansion, 5 Slots
	IC693CHS393	Base, Remote Expansion, 10 Slots (700 ft.)	IC693CHS399	Base, Remote Expansion, 5 Slots (700 ft.)
Power Supplies	IC693PWR321	Power Supply, 120/240 VAC, 125 VDC, Standard, 30 Watts	IC693PWR332	Power Supply, 12 VDC, High Capacity, 30 Watts
	IC693PWR322	Power Supply, 24/48 VDC, Standard, 30 Watts	IC693ACC340	Redundant Power Supply Base (RPSB) with 0.1 meter cable to connect to Power Supply Adapter Module
	IC693PWR328	Power Supply, 48 VDC, Standard, 30 Watts	IC693ACC341	Redundant Power Supply Base with 0.5 meter cable to connect to Power Supply Adapter Module
	IC693PWR330	Power Supply, 120/240 VAC, 125 VDC, High Capacity, 30 Watts	IC693ACC350	Redundant Power Supply Adapter (RPSA) Module. The RPSA replaces the power supply on a CPU base or expansion base and connects to a Redundant Power Supply Base.
	IC693PWR331	Power Supply, 24 VDC, High Capacity, 30 Watts		
Accessories	IC693ACC301	Replacement Battery, CPU & PCM (Qty. 2)	IC693CBL312	Rack to Rack Expansion Cable, 0.15 Meters, Shielded
	IC693ACC302	High Capacity Battery Pack	IC693CBL313	Rack to Rack Expansion Cable, 8 Meters
	IC200ACC003	EZ Program Store Flash Device (for CPU374 only)	IC693CBL314	Rack to Rack Expansion Cable, 15 Meters, Shielded
	IC693ACC310	Filler Module, Blank Slot	IC694TBB032	High density terminal block, 36 box style connections.
	IC693CBL300	Rack to Rack Expansion Cable, 1 Meter	IC694TBS032	High density terminal block, 36 spring clamp connections.
	IC693CBL301	Rack to Rack Expansion Cable, 2 Meters	IC694TBB132	High density terminal block with extended shroud, 36 box style connections.
	IC693CBL302	Rack to Rack Expansion Cable, 15 Meters	IC694TBS132	High density terminal block with extended shroud, 36 spring clamp connections
Programming and Trouble Shooting Tools	IC646MPP001	Proficy Logic Developer PLC Professional	IC646MPH101	Proficy Logic Developer PDA Software Tool with Cable Adapter
	IC646MPS001	Proficy Logic Developer PLC Standard		

\*Requires terminal block IC694TBxxxx.

## GE Fanuc Automation Information Centers

Americas:  
1-800-GE FANUC or (434) 978-5100

Asia Pacific:  
86-21-3222-4555

Europe, Middle East and Africa:  
(352) 26722-1

Europe, Middle East and Africa (CNC):  
(352) 727979-1

## Additional Resources

For more information, please visit the GE Fanuc web site at:

[www.gefanuc.com](http://www.gefanuc.com)

